



SHIBA MEMU

WHITEPAPER

The AI-Powered, Self-Marketing Cryptocurrency
Leading a New Era in the Meme Token Market

INTRODUCTION

Shiba Memu is a revolutionary cryptocurrency token combining AI and blockchain technology to create an unstoppable, entirely self-sufficient marketing powerhouse.

Using AI-based software, Shiba Memu can learn from successful marketing strategies, write its own PR and promote itself across relevant forums and social networks. As it advances, the Shiba Memu token will become more intelligent and powerful, growing exponentially on its way to become a leading player in the cryptocurrency market.

The unique combination of technologies behind Shiba Memu offers benefits such as increased ROI, self-sufficiency and absolute transparency. By leveraging AI to enhance its marketing capabilities, Shiba Memu delivers a unique investment opportunity for generating significant returns over time.

In this whitepaper, the Shiba Memu team will explore the technology behind our concept, its brilliant benefits and range of potential applications across different industries. We will also provide investors with an honest assessment of the risks and challenges associated with investing in this innovative cryptocurrency token.

OPPORTUNITY

The meme token market has seen explosive growth in recent years, with continual surges of interest and investment in these uniquely engaging and profitable digital assets.

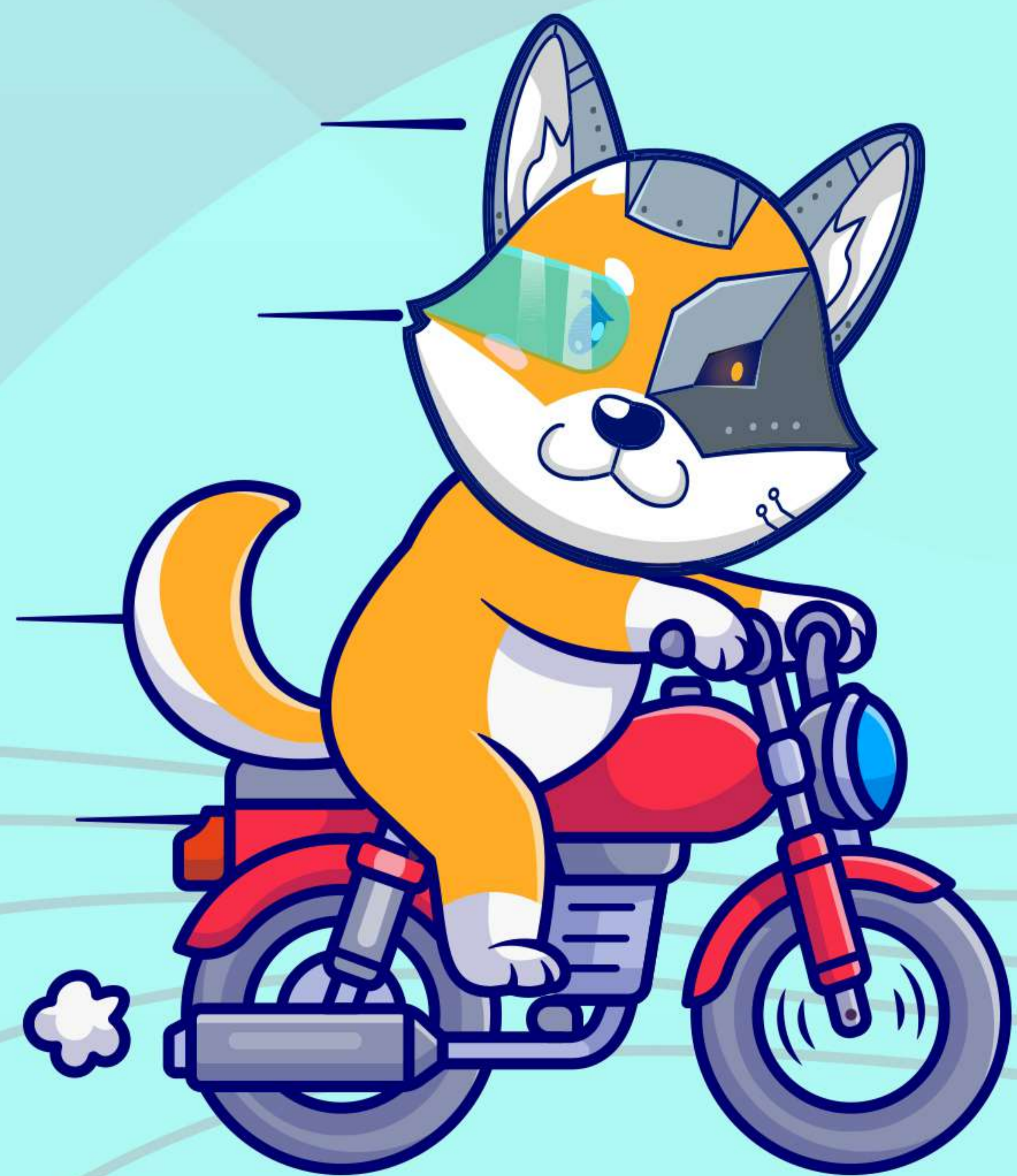
According to CoinMarketCap, the market capitalization of the meme token market has grown from \$0 in early 2020 to over \$20 billion in early 2022 – representing remarkable year-on-year growth in this soaring new market and highlighting its increasing popularity among crypto-savvy and newcomer investors alike.

A key reason for the seemingly unstoppable rise in meme token investment is their ever-expanding range of new and innovative use cases. From use as forms of payment to incentivizing community participation, meme tokens continue to gain traction across different industries and applications. As a result, demand for meme tokens is expected to grow even further in the years ahead.

In this rapidly advancing market, Shiba Memu stands out as a completely new and revolutionary meme token. Its self-sufficient, AI-powered marketing capabilities render it a compelling, highly attractive opportunity for investors.

Unlike all meme tokens to this point – which require significant human marketing efforts to gain and maintain sector traction – Shiba Memu can create its own marketing strategies, write its own PR and promote across relevant forums and social networks. This alone marks Shiba Memu as a low-maintenance, high-intrigue investment opportunity with the potential to shake up the meme token market and generate significant returns over time.

As the meme token market continues to become more crowded and competitive, Shiba Memu steps to the forefront with its self-sufficient marketing and promotion solutions. By leveraging our progressive blend of AI and blockchain technology to enhance its marketing capabilities, Shiba Memu has the potential to become a leading presence player in the meme token market and valuable addition to any investor's portfolio.



PLATFORM

At the heart of Shiba Memu's game-changing platform is its revolutionary, AI-powered marketing capabilities.

The token will feature a dedicated AI dashboard that is accessible to all users, enabling them to interact with the AI and see where and how Shiba Memu is marketing itself. The token's AI dashboard will provide real-time updates on the token's marketing activities, including conversations with users in forums, discussions on social media and other relevant marketing efforts.

Users will also enjoy the ability to engage directly with Shiba Memu AI – they may ask questions, make suggestions and provide feedback of all kinds.

By building this level of transparency and interaction into our token's AI, we empower users to develop a deeper understanding of its marketing strategy and, subsequently, a deeper connection to our project. Through high engagement, we aim to build a loyal token community that is committed to the success of the Shiba Memu token.

Ultimately, Shiba Memu's AI dashboard and interactive design represent a major breakthrough in the cryptocurrency market.

With the possibility of unprecedented levels of transparency and engagement, Shiba Memu has the potential to entirely transform how users and investors engage with and profit from digital assets.

HOW IT WORKS

Shiba Memu will be able to generate content (including press releases, social content and marketing materials) based on the data that its AI continually analyzes – then self-publish this content across relevant forums and social media platforms. Shiba Memu will then monitor and assess the performance of its marketing efforts, adjusting strategies across specific forums and social channels in its ongoing quest to optimize results.

With its aforementioned interactive AI dashboard, Shiba Memu will respond to user inquiries and grow from their feedback, channeling data from every newly developed insight into the conversations it holds with real people across forums and social channels.

To allow itself to adjust marketing strategies in real-time, Shiba Memu will also actively track and evaluate market trends and sentiment. This will enable Shiba Memu to stay ahead of the curve while establishing and maintaining its position as a leading player in the meme token market.



TOOLS

Natural Language Processing (NLP)

AI-powered NLP algorithms can be used to analyze social media posts, forums and other online communities in order to identify discussions and topics relevant to Shiba Memu. This information can then be used to develop targeted marketing campaigns and engage with potential investors.

Sentiment Analysis

By analyzing sentiment within social media posts, forums and other online communities related to Shiba Memu, our platform's AI can identify positive or negative sentiment towards the token. These inputs will support Shiba Memu in tailoring its marketing efforts to best-address any concerns that potential or existing holders may possess.

Image and Video Recognition

AI-powered image and video recognition technology helps Shiba Memu to identify and track its logo and associated branding elements across social media platforms and online communities. This empowers Shiba Memu AI to identify where its branding is being used and to most effectively track and adapt its marketing efforts.

Predictive Analytics

By analyzing historical data and market trends, our platform AI can predict future market trends and user behaviors. This can help Shiba Memu to identify potential market opportunities and adjust its marketing strategies accordingly.

Personalization

AI can be used to personalize Shiba Memu's marketing messages based on user behaviors, preferences and all related data. By continuing to personalize its automated marketing efforts to individual users and online groups alike, Shiba Memu can tailor its marketing strategies to result in optimal engagement and conversions.



TOKEN

The Shiba Memu project is powered by an ERC-20 Ethereum token coupled with a Binance Smartchain token of the same name \$SHMU.

Shiba Memu has been designed as a community-owned project with a total circulating supply of 1,000,000,000 tokens.

However, due to its cross-chain capability we have minted a total of 2B tokens where 50% (1B) of these will be removed from circulating supply to provide liquidity for swapping cross-chain.

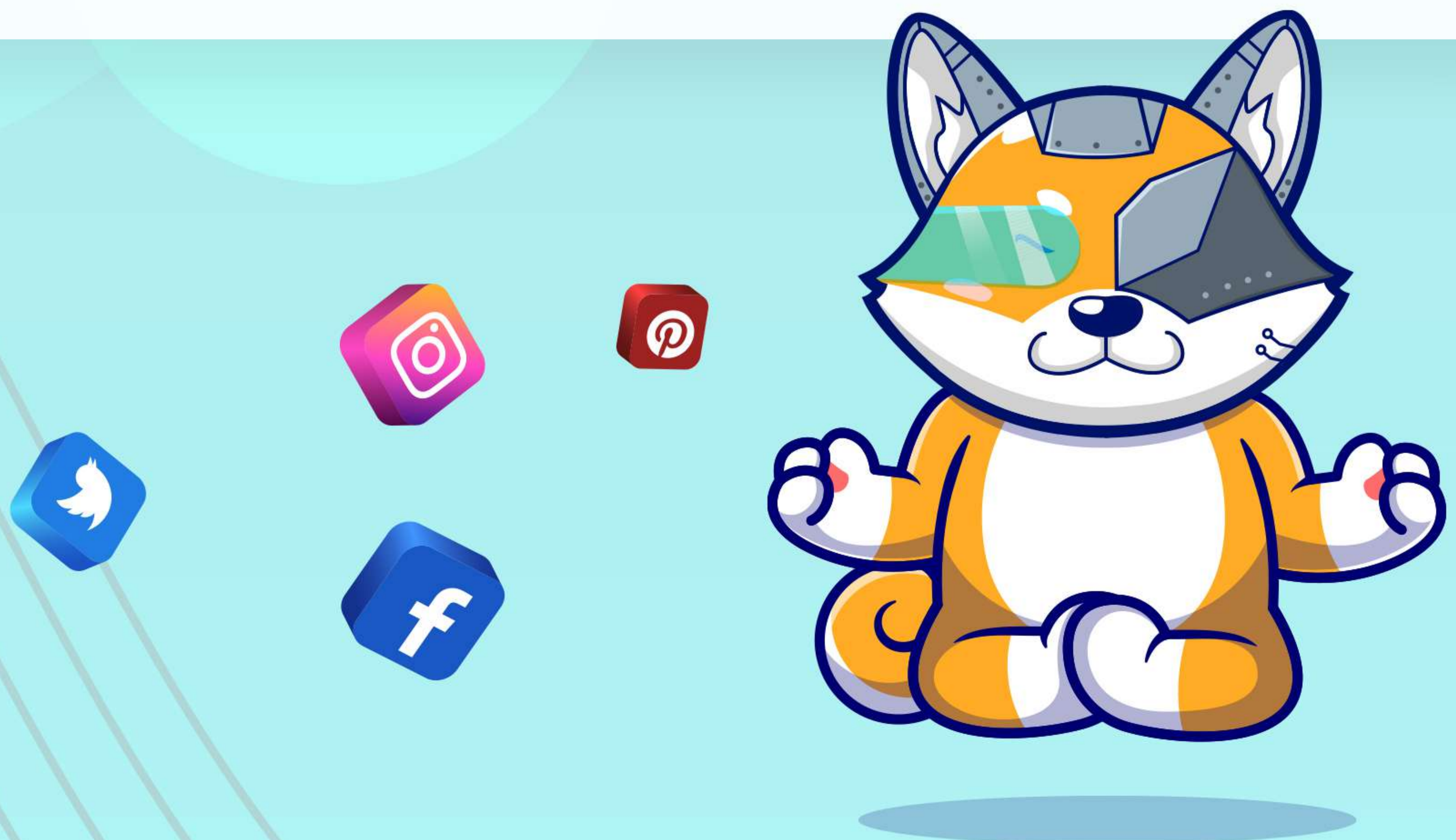
The breakdown for the 1B circulating supply is as follows:

Presale (85%)

85% (850M) of tokens will be sold in presale to ensure a strong and engaged community and will be comprised of:

350M on BSC - dedicated to the presale

500M on ETH - dedicated to the presale



CEX/DEX listings & Rewards (10%)

10% (100M) will be used to provide token liquidity, fund exchange listings and provide community rewards via staking. This allocation will ensure adequate token liquidity and wide availability across exchanges. It will also incentivize Shiba Memu community members to actively participate and promote the token. This allocation will be comprised of:

40M on BSC - dedicated to CEX/DEX listings

60M on ETH - dedicated to CEX/DEX listings

Development (5%)

The remaining 5% (50M) of tokens will be held by the Shiba Memu development team to fund ongoing development and token support. This allocation will ensure that the token continues to provide tangible utility and value to investors as it evolves. This allocation will be comprised of:

20M on BSC - dedicated to project development

30M on ETH - dedicated to project development

Cross-chain locked liquidity (1B):

1B tokens will be removed from circulating supply and locked on a secure cross-chain bridge to provide liquidity for swapping \$SHMU tokens cross-chain. We will be looking at the likes of Stargate and other existing public bridges to provide maximum decentralization and security. To enhance this we may also look to spread locked liquidity across multiple protocols. This allocation will be comprised of:

590M on BSC - would be locked on cross-chain bridge (BSC-to-ETH)

410M on ETH - would be locked on cross-chain bridge (ETH-to-BSC)

STAKING

Shiba Memu's staking program presents users with a thrilling opportunity to earn rewards by contributing to the token's marketing efforts.

By staking Shiba Memu tokens, users will be welcomed to suggest tools, websites, forums, topics and any other resource that may aid the token in self-marketing and sector visibility. If Shiba Memu decides to incorporate a user's suggestion, that user will earn additional Shiba Memu tokens as a reward.

The staking program is designed primarily to encourage community participation and engagement, while also providing added value to token holders. By incentivizing users to contribute to the token's marketing efforts, Shiba Memu can tap into its community's collective knowledge and creativity while simultaneously strengthening its loyal user base.

Users will be able to stake Shiba Memu via a variety of different staking pools, each of which will offer different rewards and benefits. Staking pools will be transparent and easily accessible, allowing users to monitor their rewards and contributions in real time.

Staking with Shiba Memu stands as an innovative program for our platform AI to leverage its community's knowledge and expertise in elevating its marketing efficacy and sector presence.

By incentivizing users to contribute to the token's success, Shiba Memu will continue to build a strong, engaged community that is invested in its long-term growth and success.

ROADMAP

Q3 2023: Launch of Shiba Memu Token

- Launch of the Shiba Memu token on Ethereum blockchain
- Presale of 85% of total token supply to the community
- Initial liquidity provided for trading on a decentralized exchange
- Launch of staking program to encourage community participation and engagement

Q4 2023: Listing on Major Exchanges

- Listing of Shiba Memu on major centralized exchanges
- Increased liquidity and accessibility for users and investors

Q1 2024: Development of AI Marketing Dashboard

- Development of an AI marketing dashboard (visible to users)
- Integration of machine learning algorithms to analyze successful marketing strategies
- Implementation of real-time updates on marketing activities and performance



Q2 2024: Launch of AI Marketing Dashboard

- Launch of the AI marketing dashboard to the community
- Implementation of user engagement features (including suggestions and feedback)
- Integration of social media platforms and forums for marketing activities

Q3 2024: Expansion of Marketing Efforts

- Expansion of marketing efforts to new markets and communities
- Partnership with influencers and content creators to promote Shiba Memu
- Development of additional marketing tools and materials

Q4 2024: Integration with Decentralized Applications

- Integration of Shiba Memu into decentralized applications and platforms
- Increased token adoption and utility

Q1 2025: Continued Development and Growth

- Continued development and improvement of the Shiba Memu token and its AI technology
- Expansion into new markets and applications
- Increased community participation and engagement

SOCIALS

To be among the first to hear of every project advancement, follow Shiba Memu on our official social channels.



<https://t.me/+ME25hQL3NvoxMDBk>



<https://www.instagram.com/shibamemu/>



<https://twitter.com/shibamemu>

